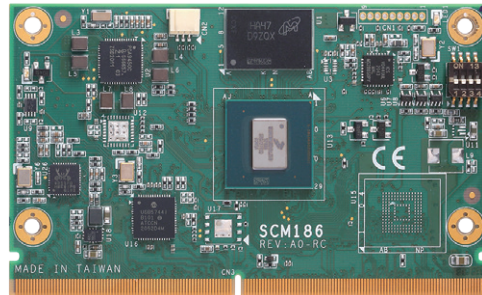


SCM186 NEW

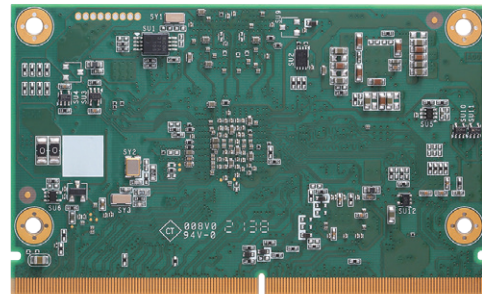
RISC Embedded SMARC v2.0 SoM with i.MX8M Plus Quad 1.6 GHz SoC, 4GB RAM

Features

- SMARC 2.0 (82 x 50 mm)
- NXP i.MX 8M Plus Quad A53 Core processor
- AI Accelerator, up to 2.3 TOPS
- LPDDR4 4GB onboard
- Supports onboard eMMC
- HDMI 2.0 up to 4K
- Dual-channel LVDS
- 10/100/1000 Mbps Ethernet
- USB 3.0
- MIPI-CSI
- Audio



▲ Top view



▲ Rear view

Core System

CPU	NXP i.MX 8M Plus 1.6GHz SoC with Quad A53
System Memory	Onboard LPDDR4 4GB
AI Accelerator	NPU, up to 2.3 TOPS
Operating System	Linux Kernel
Storage	1 x SDIO 3.0 interface 1 x eMMC; soldered on module
Power Requirement	+5V
Dimensions	82 x 50 mm
Board Thickness	1.2 mm ± 0.1 mm
Operating Temperature	0°C to +70°C (-32°F to +158°F)

I/O

Graphics	Dual Channel LVDS 1 x HDMI 2.0
Ethernet	1 x 10/100/1000 Mbps Ethernet
USB	2 x USB 3.0 2 x USB 2.0
COM	2 x UART with TX/RX 1 x UART RX/TX (for Debug Console)
I ² C	3 x I ² C interface
OTG	1 x USB 2.0 OTG
Audio	1 x I2S
Camera Input	1 x CSI 4-lane 1 x CSI 2-lane
Security	1 x TPM 2.0 (Option, none in default)
Storage	1 x SD card slot
PCIe	1 x PCIe Gen2 x1

Ordering Information

Standard	
SCM186-Quad	SMARC 2.0, NXP i.MX 8M Plus SoC Quad A53, 4GB RAM, HDMI, LVDS, LAN, USB
SCM186-Quad-8G	SMARC 2.0, NXP i.MX 8M Plus SoC Quad A53, 4GB RAM, 8GB eMMC, HDMI, LVDS, LAN, USB

* Specifications and certifications may vary based on different requirements.

