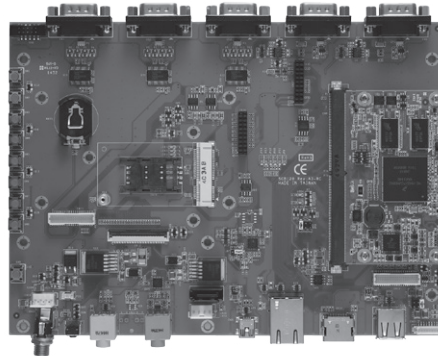


SCM120-120-EVK

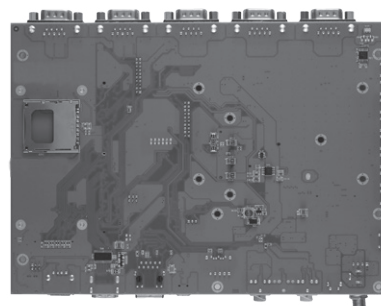
SMARC v1.0 SoM Evaluation Kit with Quad/DualLite 800 MHz (Industrial)
SoC, 1GB Memory, 4GB eMMC, Gigabit Ethernet, Audio, CAN, MIPI and PCAM

Features

- Ultra low power consumption Cortex™-A9
- 2 CAN 2.0B
- 24-bit TTL LCD
- LVDS/HDMI 1080P
- 10/100/1000 Mbps Ethernet
- Open GL ES2.0
- Linux 3.0.35/Android 4.3
- Audio



▲ Front view



▲ Rear view

Core System

| | |
|--------------------|---|
| Processor | Freescall i.MX6 Quad/DualLite ARM Cortex™-A9 CPU 800 MHz (On SCM120 SoM) |
| System Memory | Onboard DDR3-1600, up to 1GB (on SCM120 SoM) |
| OS | Linux kernel 3.0.35, Android 4.3 |
| RTC | Battery on the Baseboard is required |
| Power Requirement | +5V ± 5%, 5A |
| Size | 200 x 140 mm |
| Board Thickness | 1.6 mm ± 0.15mm |
| Operation Humidity | 10% ~ 95%, non-condensing |

I/O

| | |
|---------------------------|---|
| Graphics | 1 x 24-bit TTL LCD 1 x HDMI 1080P 1 x Dual channel 24-bit LVDS |
| Ethernet | 1 x RJ-45 for 10/100/1000 Mbps |
| Audio | MIC-in |
| COM | 1 x COM with TX/RX/RTS/CTS 1 x Console port |
| USB | 2 x USB 2.0: 1 OTG client and 1 Host |
| I ² C | 4 x I ² C Interface |
| CAN | 2 x D-Sub 9-pin male connectors for 2.0B protocol-compatible controller Area Network (CAN) interfaces |
| Keypad | 8 button-detect circuit |
| Storage | 1 x SD/MMC socket 1 x SATA connector SPI nor Flash |
| Touch | 4-wire touch screen controller |
| Mini Card | 1 x full-size (with SIM) |
| Extension Slot and Socket | 1 x connector with I2C/SPI/UART |
| MIPI | 1 x serial camera |
| PCAM | 1 x PCAM 8-bit |

Ordering Information

| | |
|-----------------|--|
| Standard | SCM120-120 EVK- DualLite-I SCM120-120 (DualLite-I) evaluation kit board) |
| | SCM120-120 EVK-Quad-I SCM120-120 (Quad) evaluation kit board) |

| | |
|-------------------|-----------------------------------|
| Optional | |
| P/N: 5078S120100E | SCM120 heatspread (-40°C ~ +70°C) |
| P/N: 5078Q120200E | Heatsink (-40°C ~ +75°C) |

Packing list

| | |
|-----|---|
| N/A | - USB OTG cable - Console port cable - Power cable - AC DC adapter 5V/5A 25W - Utility CD |
|-----|---|