

# IES-1050A



IES-1050A

## ▶ Industrial 5-port Slim type Unmanaged Ethernet Switch with 5x10/100Base-T(X)

### Features

- Support 5 ports 10/100Base-T(X)
- Support auto-negotiation and auto-MDI/MID-X
- Support Store and forward transmission
- Support flow control
- Provide Relay output
- Compact size for easily installation
- Rigid IP-30 housing design
- DIN-rail and wall mounting enable

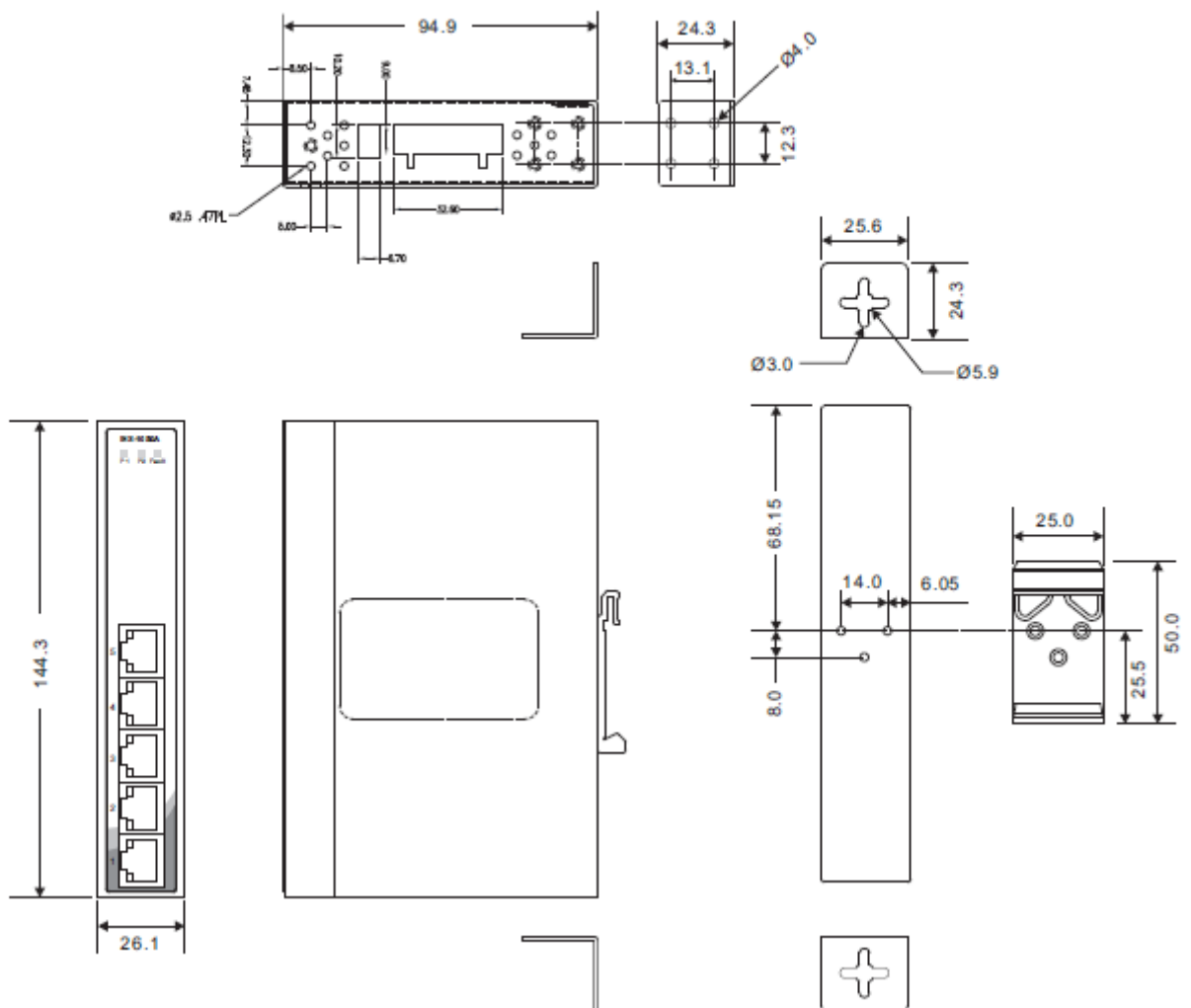


### Introduction

IES-1050A is unmanaged Ethernet Switch with 5x10/100Base-T(X) ports and extended operating temperature range from  $-40^{\circ}\text{C}$  to  $75^{\circ}\text{C}$  for the harsh environments. The enclosure designed with compact size and a robust housing; it can help you to easily installed.

Dimensions

Unit = mm (Tolerance ±0.5mm)



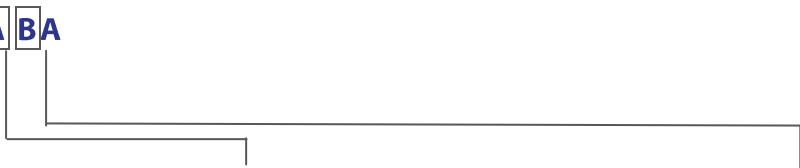
Specifications

ORing Switch Model	IES-1050A
Physical Ports	
10/100Base-T(X) Ports in RJ45 Auto MDI/MDIX	5
Technology	
Ethernet Standards	IEEE 802.3 for 10Base-T IEEE 802.3u for 100Base-TX IEEE 802.3x for Flow control
MAC Table	1K
Packet buffer	448K Bits
Processing	Store-and-Forward
Switch Properties	Switching latency: 7 us Switching bandwidth: 1Gbps Throughput (packet per second): 0.744Mpps@64Bytes packet

LED indicators	
Power Indicator (PWR)	Green: Power LED x 2
Fault Indicator	Amber: Indicate PWR1 or PWR2 failure
10/100Base-T(X) RJ45 Port Indicator	Upper LED for Link/Act indicator: Green for Link/Act Lower LED for duplex indicator, Amber for full duplex, off for half duplex
DIP Switch	
DIP switch 1	Power 1 fail warning: ON for Enable, OFF for disable
DIP switch 2	Power 2 fail warning: ON for Enable, OFF for disable
Fault contact	
Relay	Relay output to carry capacity of 1A at 24VDC
Power	
Redundant Input power	Dual 12~48VDC on 6-pin terminal block
Power consumption (Typ.)	<2Watts, 0.13A-0.04A
Overload current protection	Present
Reverse Polarity Protection	Present
Physical Characteristic	
Enclosure	IP-30 Metal
Dimension (W x D x H)	26.1 (W) x 94.9 (D) x 144.3 (H)mm 1.03 (W) x 3.74 (D) x 5.68 (H) inch
Weight (g)	382 g
Hardware Version	V2.0
Environmental	
Storage Temperature	-40 to 85°C (-40 to 185°F)
Operating Temperature	-40 to 75°C (-40 to 167°F)
Operating Humidity	5% to 95% Non-condensing
Regulatory approvals	
EMC	CE EMC (EN 55024, EN 55032), FCC Part 15 B
EMI	EN 55032, CISPR32, EN 61000-3-2, EN 61000-3-3, FCC Part 15 B class A
EMS	EN 55024 (IEC/EN 61000-4-2 (ESD: Contact 4KV, Air 8KV), IEC/EN 61000-4-3 (RS: 3V), IEC/EN 61000-4-4 (EFT Power 0.5KV, Signal 0.5KV), IEC/EN 61000-4-5 (Surge: Power 0.5KV, Signal 1KV), IEC/EN 61000-4-6 (CS: 3V), IEC/EN 61000-4-8 (PFMF), IEC/EN 61000-4-11 (DIP))
Shock	IEC60068-2-27
Free Fall	IEC60068-2-31
Vibration	IEC60068-2-6
Safety	EN 60950-1 (LVD)
MTBF	1,555,711hrs
Warranty	5 years

Ordering Information

IES-10A BA



Code Definition	10/100Base-T(X) Port Number	Additional Port Number
<b>Option</b>	-5: 5 ports	-0: 0 port

Available Model	Model Name	Description
	IES-1050A	Industrial 5-port Slim type unmanaged Ethernet switch with 5x10/100Base-T(X)

<b>Packing List</b> <ul style="list-style-type: none"> <li>IES-1050A x 1</li> <li>DIN-Rail Kit x 1</li> <li>Wall-mount Kit x 2</li> <li>Quick Installation Guide x 1</li> </ul>	<b>Optional Accessories</b> <ul style="list-style-type: none"> <li>DR/SDR/DRP Series DIN-Rail power supply</li> </ul>
---	---